

# LAKEFIELD OF THE LANDINGS AT WELLINGTON P.U.D. - PLAT 2A

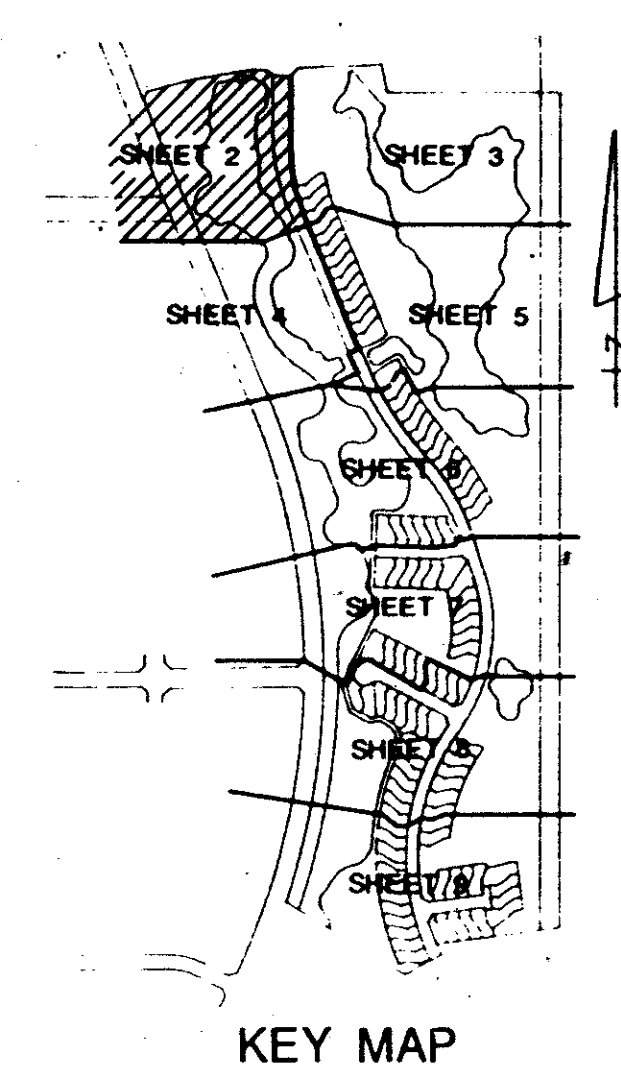
IN PART OF SECTION 7 AND 18, TOWNSHIP 44 SOUTH, RANGE 41 EAST

PALM BEACH COUNTY, FLORIDA  
IN NINE SHEETS SHEET NO. 2

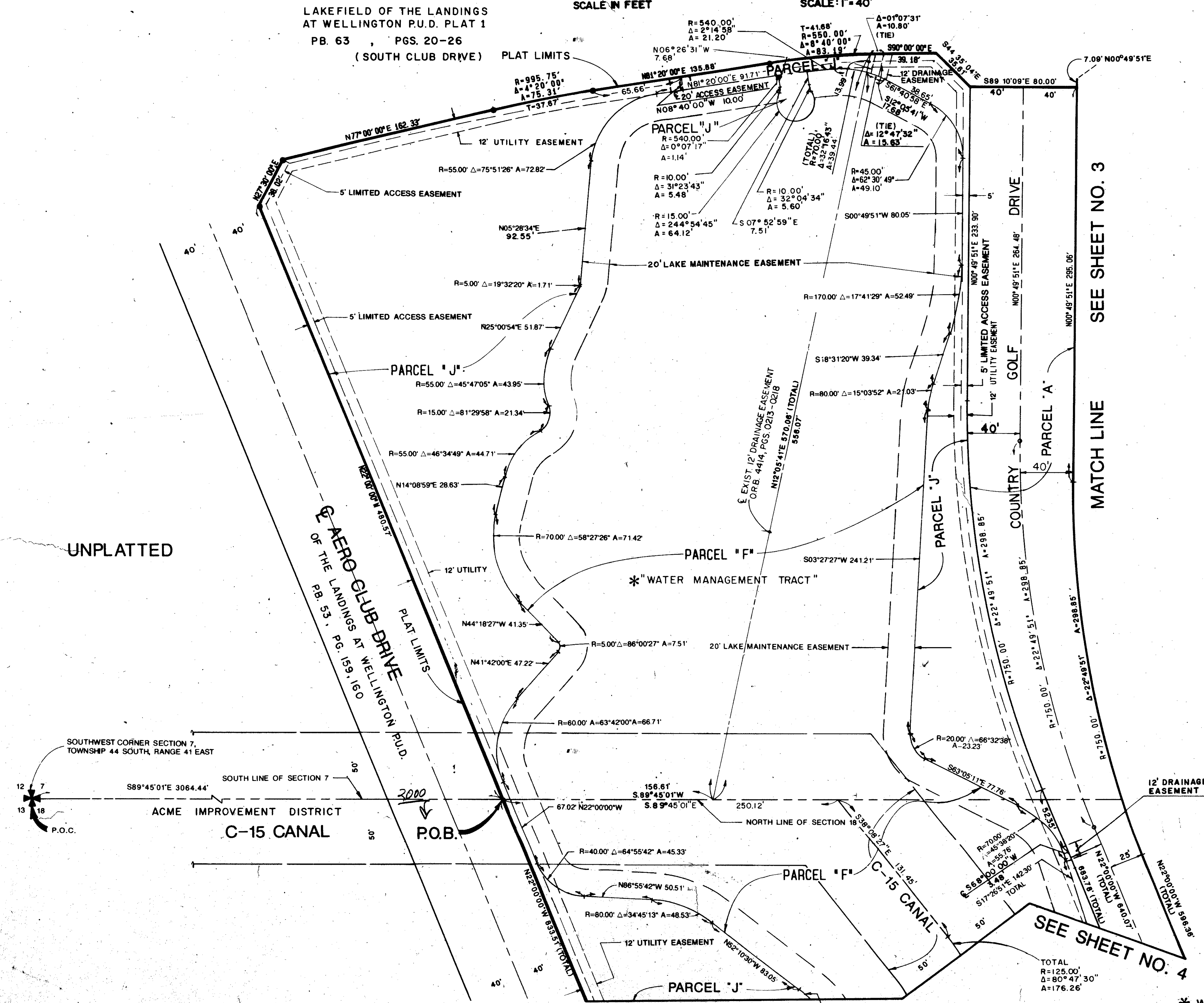
GEE & JENSON  
ENGINEERS - ARCHITECTS - PLANNERS, INC.  
WEST PALM BEACH, FLORIDA  
AUGUST 1989

SCALE IN FEET SCALE: 1"=40'

LAKEFIELD OF THE LANDINGS  
AT WELLINGTON P.U.D. PLAT 1  
PB. 63 , PGS. 20-26  
(SOUTH CLUB DRIVE) PLAT LIMITS



STATE OF FLORIDA  
COUNTY OF PALM BEACH  
This plat was filed for  
record at \_\_\_\_\_ M. this \_\_\_\_\_ day  
of \_\_\_\_\_ 1989, and duly  
recorded in Plat Book No. \_\_\_\_\_  
on Pages \_\_\_\_\_ thru \_\_\_\_\_.  
JOHN B. DUNKLE  
Clerk Circuit Court  
By: \_\_\_\_\_ D.C.



UNPLATTED

SEE SHEET NO. 3  
MATCH LINE

SEE SHEET NO. 4

LAKEFIELD OF THE LANDINGS AT WELLINGTON  
SUBDIVISION OF THE LAKEFIELD AT WELLINGTON  
ROCK 64 FLOOR PLAN #1005  
PAGE 98  
FLOOD ZONE B  
GRID # 77-287  
SE 78-287  
PUB NAME 7/11/94/41 2000S  
THE 727

COMPUTED D.W.L./A.B.  
DRAWN D.W.L./A.B.  
CHECKED W.J.J.  
APPROVED T.H.D.

NOTE: ALL LINES ARE RADIAL UNLESS OTHERWISE NOTED!

LAKEFIELD OF THE LANDINGS AT WELLINGTON P.U.D. - PLAT 2A

\* WATER MANAGEMENT TRACTS ARE THE PERPETUAL MAINTENANCE OBLIGATION OF THE LAKEFIELD HOMEOWNERS ASSOCIATION, INC.

PET. 78-287

0269-008

64/98